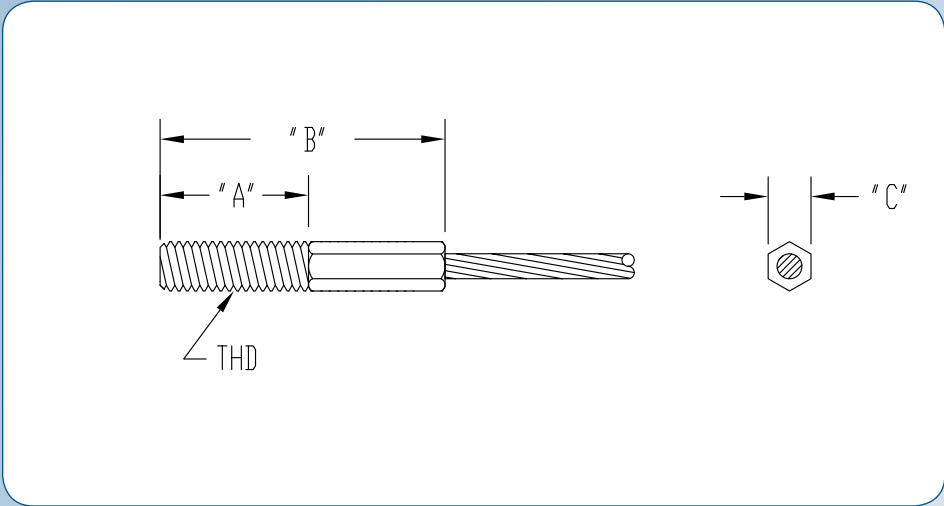


MICROLIN FITTINGS

MICROLIN THREADED FITTINGS



BERGEN CABLE TECHNOLOGY, LLC



MICROLIN THREADED FITTINGS

PART NUMBER	FITS CORE DIAMETER	MATERIAL	FINISH	THD	"A"	"B"	"C"
BW430-4	.046-.048	STST	None	#5-40 2A	0.50	1.04	0.10
433-M4-040	.020-.037	STST	None	#5-40 2A	0.25	0.77	0.10
BW430-5	.020-.037	STST	None	#5-40 2A	0.50	1.04	0.10
BW433-M5-053	.020-.037	STST	None	#5-40 2A	2.03	2.98	0.10
BW433-M3-058	.020-.037	STST	None	M4 X 0.7	0.47	1.00	0.10
BW430-7	.008-.018	STST	None	#5-40 2A	0.50	1.04	0.10
BW443-01-042	0.032	STST	None	#6-40 3A	0.56	1.00	0.12
BW443-01-039	0.032	STST	None	#6-40 2A	1.00	15.50	0.12
BW444-M3-442	0.032	BRASS	None	#8-32 2A	0.50	1.00	0.12
BW434-M5-057	.046-.048	BRASS	None	#8-32 2A	0.34	0.75	0.16
BW433-M5-037	.046-.048	BRASS	None	#5-40 2A	0.70	1.19	0.10

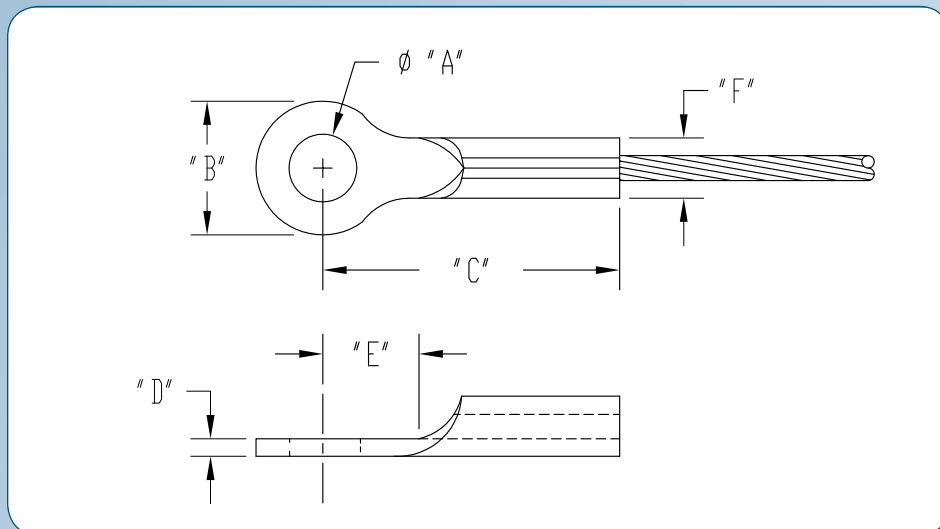
Note: All dimensions are reference, after swage and in inches.

MICROLIN FITTINGS

MICROLIN EYE FITTINGS



BERGEN CABLE TECHNOLOGY, LLC



MICROLIN EYE FITTINGS

PART NUMBER	FITS CORE DIAMETER	MATERIAL	FINISH	ϕ "A"	"B"	"C"	"D"	"E"	"F"
232-15-146	0.048	Carbon St	Zinc	0.175	0.32	0.71	0.042	0.17	0.14
3018-1	.010-.034	STST	None	0.120	0.19	0.30	0.030	0.30	0.10
BW240-0	.014-.026	STST	None	0.142	0.26	0.45	0.040	0.13	0.16
EY-300-42-90	.014-.026	STST	Passivate	0.300	0.62	0.85	0.042	0.65	0.16
EY-380-42-90	.014-.026	STST	Passivate	0.380	0.62	0.85	0.042	0.65	0.16
BW240-1	.027-.034	STST	Passivate	0.142	0.26	0.45	0.040	0.13	0.16
EY-090-40-1	.027-.034	STST	None	0.090	0.26	0.45	0.040	0.13	0.16
BW240-2	.037-.046	STST	None	0.142	0.26	0.59	0.040	0.13	0.16
BW240-2PASS	.037-.046	STST	Passivate	0.142	0.26	0.59	0.040	0.13	0.16
BW240-15S	0.046	STST	None	0.142	0.26	0.45	0.040	0.13	0.16

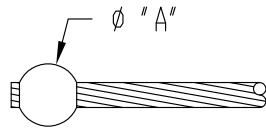
Note: All dimensions are reference, after swage and in inches.

MICROLIN FITTINGS

MICROLIN BALL FITTINGS



BERGEN CABLE TECHNOLOGY, LLC

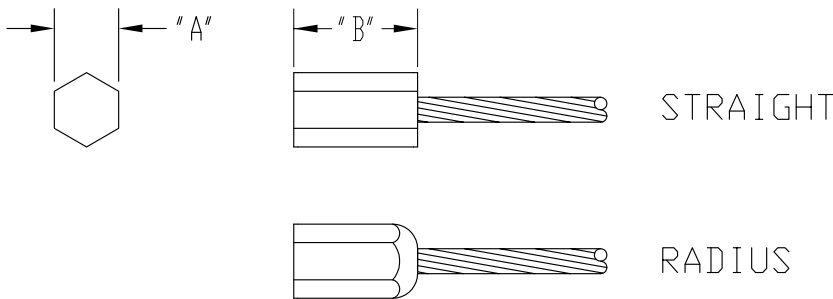


MICROLIN BALL FITTINGS

PART NUMBER	FITS CORE DIAMETER	MATERIAL	FINISH	$\phi \text{ 'A'}$
BW303-M2-131	.006-.024	STST	None	0.125
BW303-M2-068	.024-.026	STST	None	0.125
BW302-1S	.027-.037	STST	None	0.125
BW303-15-138	.038-.048	STST	Passivate	0.125

Note: All dimensions are reference, after swage and in inches.

MICROLIN PLUG FITTINGS (HEX SWAGE)



MICROLIN PLUG FITTINGS (HEX SWAGE)

PART NUMBER	FITS CORE DIAMETER	MATERIAL	FINISH	"A"	"B"	END TYPE
BW331-1	.018-.024	STST	None	0.14	0.325	Straight
BW331-2	.020-.034	STST	None	0.14	0.325	Straight
BW331-3	.037-.048	STST	None	0.14	0.325	Straight
312-M4-492	0.037	STST	None	0.08	0.20	Straight
313-M4-466	0.037	STST	None	0.22	0.25	Radius
314-01-477	.037-.048	Brass	None	0.14	0.38	Radius

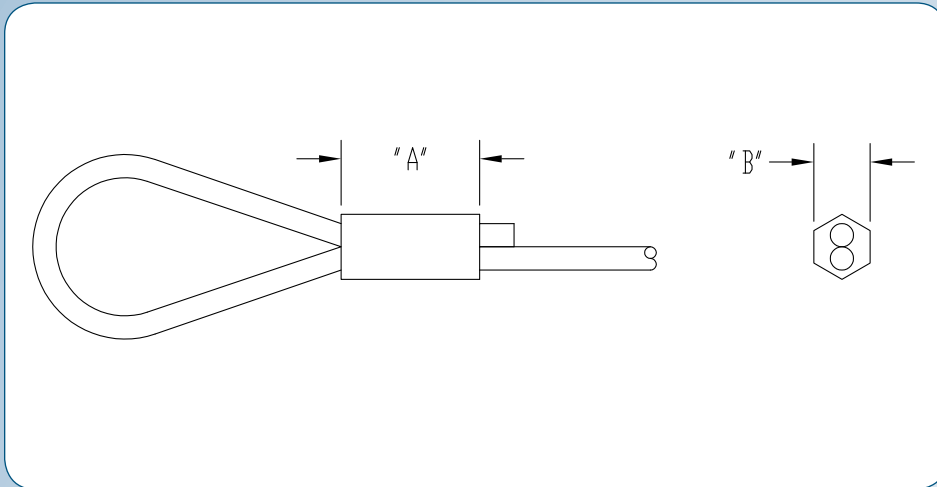
Note: All dimensions are reference, after swage and in inches.

MICROLIN FITTINGS

MICROLIN LOOP SLEEVE FITTINGS



BERGEN CABLE TECHNOLOGY, LLC



MICROLIN LOOP SLEEVE FITTINGS

PART NUMBER	FITS CORE DIAMETER	MATERIAL	FINISH	"A"	"B"
641-S-028	.008-.011	STST	None	.20	0.13
641-S-041	.012-.018	STST	None	.20	0.13
641-S-052	.018-.024	STST	None	.20	0.13
641-S-070	.026-.034	STST	None	.20	0.13
641-S-101	.037-.048	STST	None	.20	0.13

Note: All dimensions are reference, after swage and in inches.